

DH Vampire FB.5/9

SPECIAL SCHEMES

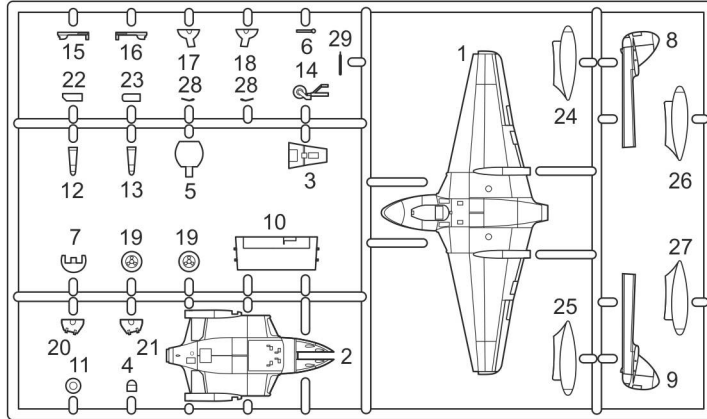


MKM144171L
1/144 scale

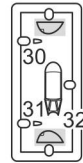
MARK I Ltd.
PO Box 10
Prague 10 - Strašnice
CZ-100 31
Czech Republic
mark1@gmail.cz
www.4pluspublications.com

parts not
to be used

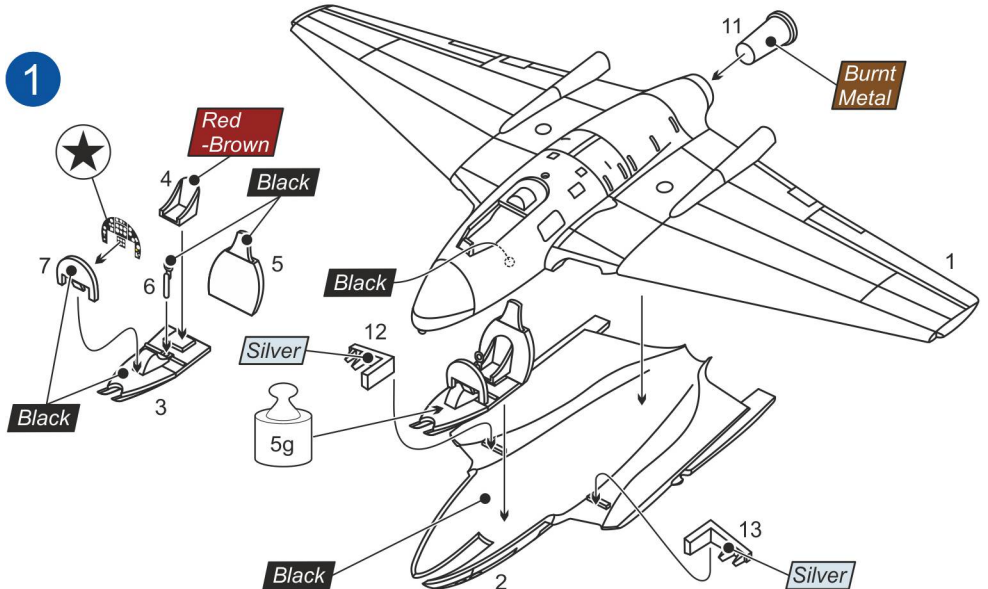
plastic parts



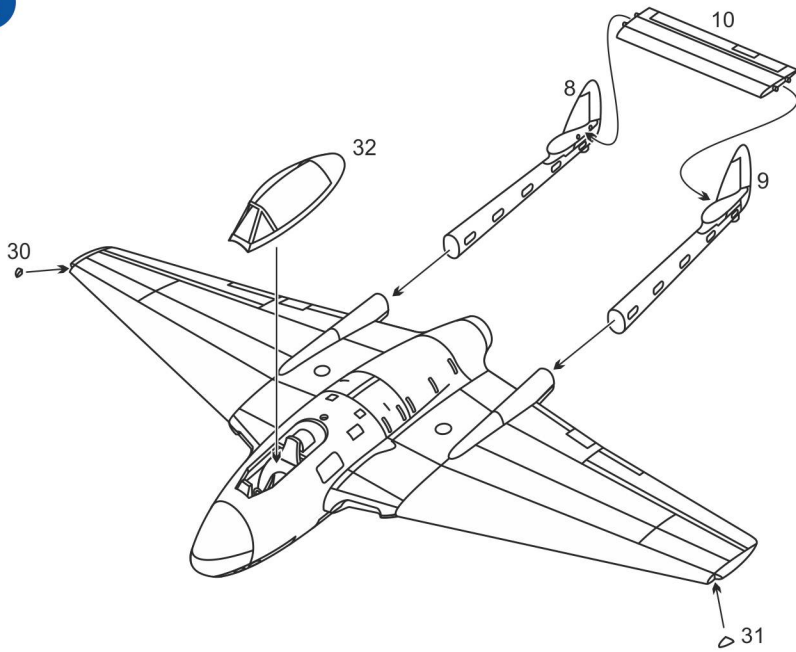
clear parts



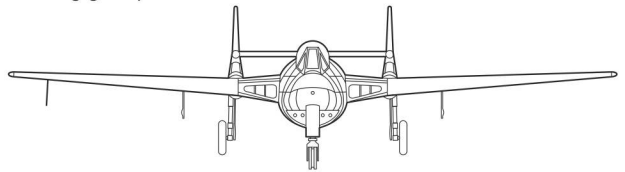
- 2x Repeat this operation
- Glue
- Don't glue
- Decal
- Detach/cut
- ? Optional



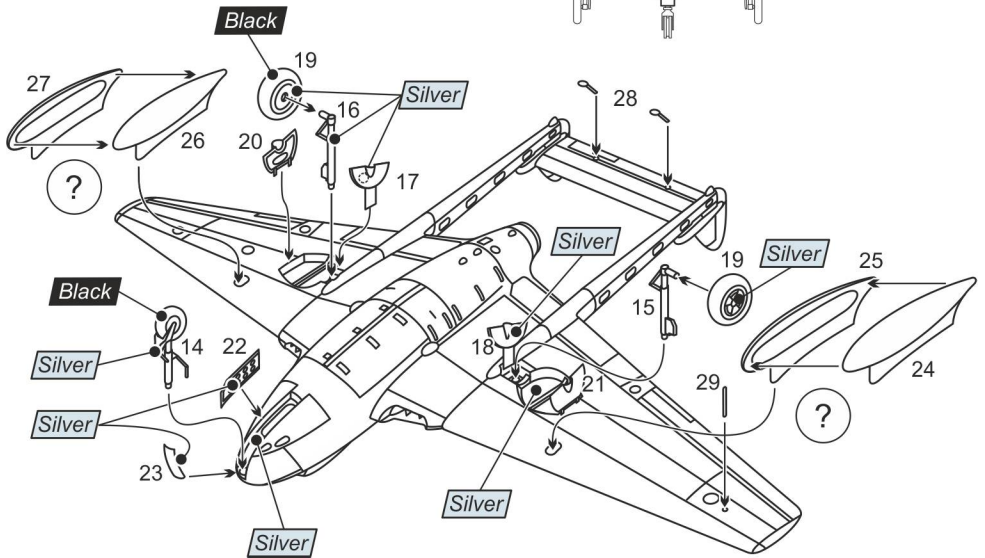
2



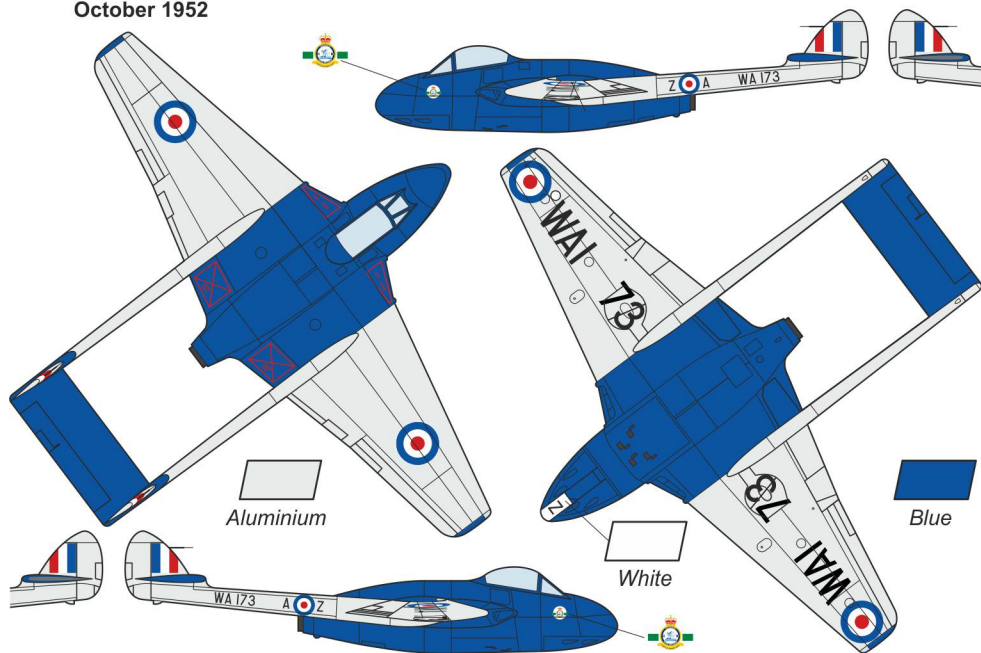
Landing gear position



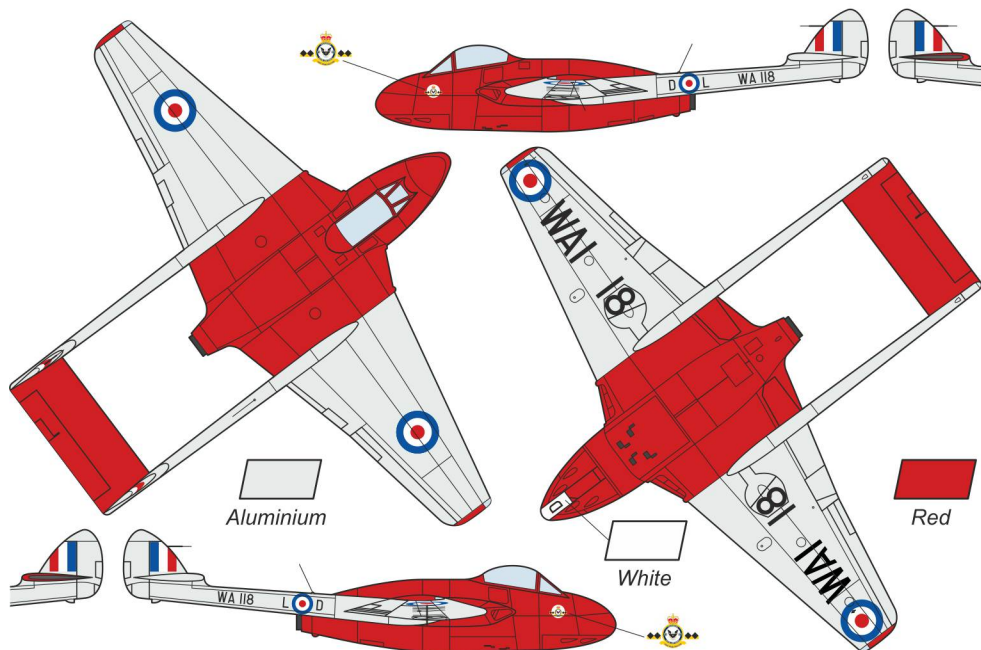
3



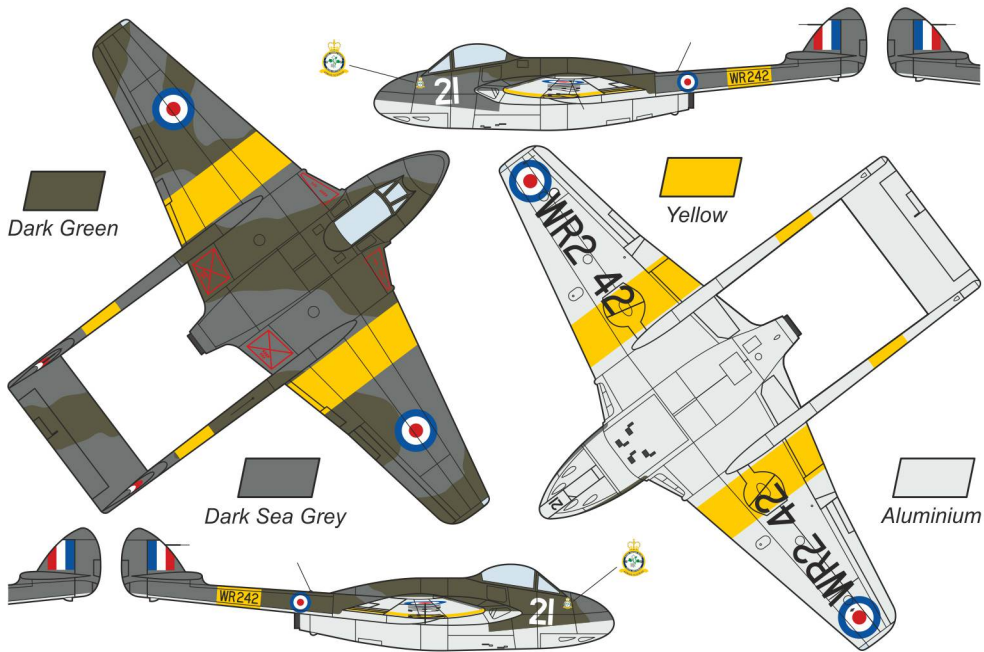
A de Havilland DH.100 Vampire FB Mk.5 (English Electric-built), WA173, Black A-Z, No.3 Sq., combined aerobatic team, RAF, Wildenrath Air Base, Germany, seen at Gütersloh, October 1952



B de Havilland DH.100 Vampire FB Mk.5 (English Electric-built), WA118, Black L-D, No.71 Sq., combined aerobatic team, RAF, Gütersloh Air Base, Germany, October 1952



C de Havilland DH.100 Vampire FB Mk.9, WR242, White 21, No.7 Flying Training School (FTS), RAF, Valley Air Base, Anglesey, U.K., late 1950s



D de Havilland DH.100 Vampire FB Mk.9, WR264, White 29, Royal Air Force College (RAFC), RAF, Cranwell Air Base, Lincolnshire, U.K., early 1960s

